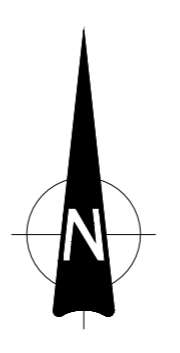
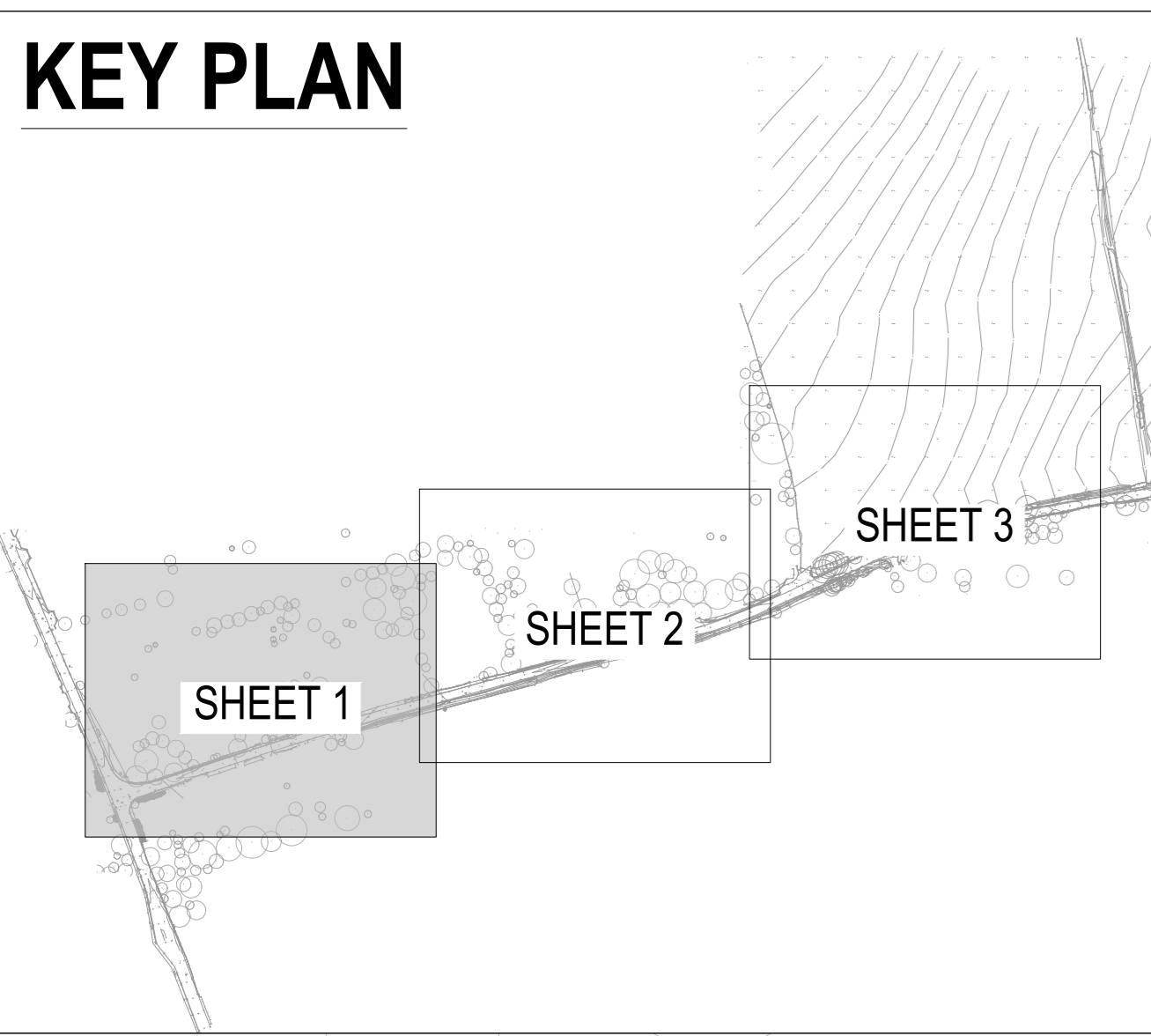
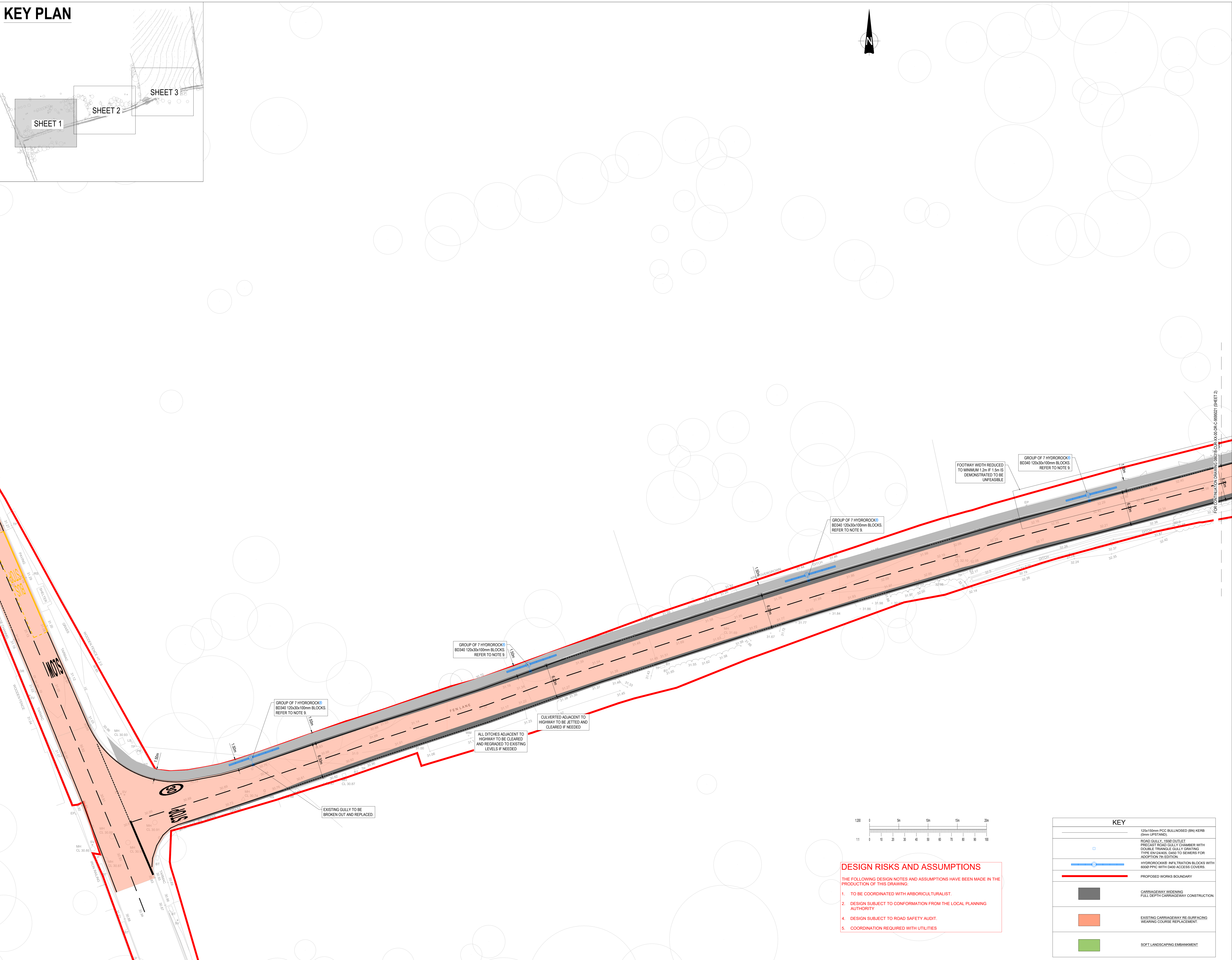


# KEY PLAN



- GENERAL NOTES:**
- THIS DRAWING IS TO BE READ IN CONJUNCTION WITH ALL RELEVANT ARCHITECTS AND ENGINEERS DRAWINGS AND SPECIFICATIONS.
  - DO NOT SCALE THIS DRAWING. ANY AMBIGUITIES, OMISSIONS AND ERRORS ON DRAWINGS SHALL BE BROUGHT TO THE ENGINEERS ATTENTION IMMEDIATELY. ALL DIMENSIONS MUST BE CHECKED / VERIFIED ON SITE.
  - ALL DIMENSIONS ARE IN METRES UNLESS NOTED OTHERWISE.
  - FOR GENERAL NOTES REFER TO DRAWING.
- TO BE READ IN CONJUNCTION WITH:**
- TOPOGRAPHICAL SURVEY BASED ON SLR CONSULTING TOPOGRAPHICAL SURVEY DRAWING REF: 403.065936.0001.00.0, Havering\_Topo\_0325-AIL, DATED MARCH 2025
  - REFER TO CBA TREES ARBORICULTURAL CONSULTANCY REPORT FOR AGRICULTURAL IMPLICATIONS ASSESSMENT, REF:11656, DATED JAN 2026
  - FOR ALL FEN LANE ROAD WIDENING DRAWINGS REFER TO CURTINS DRAWINGS 086318-CUR-XX-00-DR-C-95400 TO 086318-CUR-XX-00-DR-C-95436
  - FOR CONSTRUCTION DETAILS REFER TO CURTINS DRAWINGS 086318-CUR-XX-00-DR-C-95067 - 086318-CUR-XX-00-DR-C-95069
  - FOR HIGHWAY CONTOURS REFER TO CURTINS DRAWINGS 086318-CUR-XX-00-DR-C-95150 TO 086318-CUR-XX-00-DR-C-95160
  - FOR HIGHWAY LONGSECTIONS REFER TO CURTINS DRAWINGS 086318-CUR-XX-00-DR-C-95950 TO 086318-CUR-XX-00-DR-C-95961
  - FOR HIGHWAY CROSS SECTIONS REFER TO CURTINS DRAWINGS 086318-CUR-XX-00-DR-C-95850 TO 086318-CUR-XX-00-DR-C-95852
  - HYDROROCK ATTENUATION SIZING BASED ON ATTENUATING THE ADDITIONAL FOOTWAY HYDROROCK TO DISCHARGE VIA INFILTRATION BASED ON AN ASSUMED INFILTRATION RATE OF 1x10.6m<sup>3</sup>.



**DESIGN RISKS AND ASSUMPTIONS**

THE FOLLOWING DESIGN NOTES AND ASSUMPTIONS HAVE BEEN MADE IN THE PRODUCTION OF THIS DRAWING.

- TO BE COORDINATED WITH ARBORICULTURALIST.
- DESIGN SUBJECT TO CONFORMANCE FROM THE LOCAL PLANNING AUTHORITY
- DESIGN SUBJECT TO ROAD SAFETY AUDIT.
- COORDINATION REQUIRED WITH UTILITIES

KEY	
	125x150mm PCC BULLNOSED (BN) KERB (9mm LPSIF AND)
	ROAD GULLY 1500 OULET PRECAST ROAD GULLY CHAMBER WITH DOUBLE TRIANGLE GULLY GRATING TYPE EN124406, D450 TO SEWERS FOR ADOPTION 7th EDITION
	HYDROROCK INFILTRATION BLOCKS WITH 6000 PPIC WITH D400 ACCESS COVERS
	PROPOSED WORKS BOUNDARY
	CARRIAGEWAY WIDENING FULL DEPTH CARRIAGEWAY CONSTRUCTION
	EXISTING CARRIAGEWAY RE-SURFACING WEARING COURSE REPLACEMENT
	SOFT LANDSCAPING EMBANKMENT

Rev	Description	Date	By	Chk
P04	UPDATED FOOTWAY WIDTH	24.02.26	NMH	TH
P03	UPDATED REDLINE BOUNDARY	09.12.25	GDP	TH
P02	HYDROROCK UPDATED WITH PPIC ACCESS	01.05.25	NMH	GDP
P01	PRELIMINARY ISSUE	08.08.25	NMH	TH

**Curtins**

40 Concor Street, London, ECV1 6AP  
 t: 020 726 2240  
 london@curtins.com  
 www.curtins.com

**SUITABLE FOR INFORMATION S2**

Project: **EAST HAVERING DATA FREEPORT**

Dig Title: **SECTION 278 WORKS FEN LANE ROAD WIDENING DRAINAGE LAYOUT (SHEET 1 of 3)**

Drawn By:	NMH	Designed By:	NMH	Checked By:	TH
Date:	08.08.25	Scales @ AD:	1:200		
Project No. - Originator - Function - Spatial - Form - Discipline - Number	086318 - CUR - XX - 00 - DR - C - 95020				
Revision:					P04